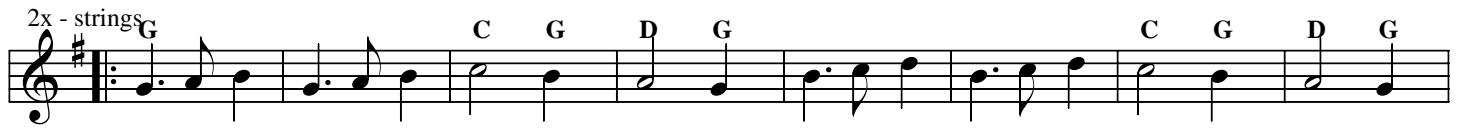
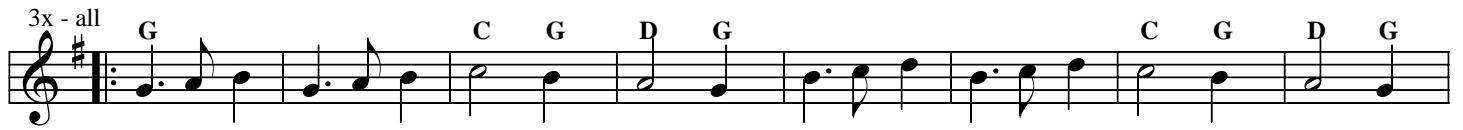


# Il Canario

from La Gratie d'Amore, 1602

Cesare Negri (c.1535-after 1604)



1x - all

Two staves of music in G major. The first staff contains measures 1-4 with chords G, C, G, D, G. The second staff contains measures 5-8 with chords C, G, D, G.

4x - rec.s (v.2)

Two staves of music in G major. The first staff contains measures 1-8 with chords G, C, G, Am, G, D, G, Em, G, C, G, D, G, D. The second staff contains measures 9-12 with chords G, Am, G, D, G, C, G, C, G, D, G.

2x - all (v.2)

Two staves of music in G major. The first staff contains measures 1-8 with chords G, C, G, Am, G, D, G, Em, G, C, G, D, G, D. The second staff contains measures 9-12 with chords G, Am, G, D, G, C, G, C, G, D, G.

4x - crumhorns

Two staves of music in G major. The first staff contains measures 1-8 with chords G, C, G, D, G, C, G, D, G. The second staff contains measures 9-12 with chords C, G, D, G, C, G, D, G.

1x - rec.s

Two staves of music in G major. The first staff contains measures 1-8 with chords G, C, G, D, G, C, G, D, G. The second staff contains measures 9-12 with chords C, G, D, G, C, G, D, G.

4x - recs, plucked

Two staves of music in G major. The first staff contains measures 1-8 with chords G, C, G, D, G, C, G, D, G. The second staff contains measures 9-12 with chords C, G, D, G, C, G, D, G.

1x - all

Two staves of music in G major. The first staff contains measures 1-8 with chords G, C, G, D, G, C, G, D, G. The second staff contains measures 9-12 with chords C, G, D, G, C, G, D, G.

