

Violini I

# Symphony nr 7

for Orchestra

in D minor

Antonín Dvořák

Op.70

I

Allegro maestoso (♩. = 66)

Violini I

11

*pp* *cresc.*

14

*f* *ff* *f*

21

*fz*

25

**A** *f* *fz* *fz*

30

*ff*

33

*f* *con forza*

39

*fz* *fz* *fz* *f* *p*

**B**

Dvořák - Symphony nr 7 in D minor

003-DvoSy7V11B

Public Domain

[illegible]

A musical score for the song 'The Rose Tree'. The score is written on a single staff with a treble clef and a key signature of one flat (B-flat). The tempo is marked 'Allegretto' and the time signature is 3/4. The melody begins with a quarter rest, followed by a quarter note G4, a quarter note A4, and a quarter note Bb4. This is followed by a half note G4 and a half note F4. The melody then continues with a quarter note E4, a quarter note D4, and a quarter note C4. The piece concludes with a final quarter note Bb4. The dynamics are marked 'pp' (pianissimo) at the beginning and 'f' (forte) at the end. The tempo is marked 'Allegretto' and the time signature is 3/4.

The first staff of music shows a melodic line in G major. It begins with a half note G4, followed by a quarter note A4, and a quarter note B4. A fermata is placed over the B4. The dynamics *fz* and *pp* are indicated below the first and second measures respectively. The third measure contains a half rest, and the fourth measure contains a quarter rest. The fifth measure contains a half rest, and the sixth measure contains a quarter rest. The seventh measure contains a half rest, and the eighth measure contains a quarter rest. The ninth measure contains a half rest, and the tenth measure contains a quarter rest. The dynamics *pp* are indicated below the tenth measure.

93 

## Violini I

3

102 *fz* *pp* *f* *f*

109 *p* *pp* 1 **F**

115 *pp* *mf* *fz*

120 *cresc.* *f* *ff* 3

124 **G**

128 *ff* *con forza fz*

133 *fz* *fz* **H**

137 *f* *fz* *ff* *dim.*

142 *mp* *p* *dim.* *pp* 1

Dvořák - Symphony nr 7 in D minor

003-DvoSy7V11B

## Violini I

149 *pp* *espressivo* *pp*

155 *pp* *ff*

159

164 *pp*

179 *ff* *f* *ff*

185 *fz* *fz*

*divisi*

191 *fff*

197

## Violini I

5

202

*mf* *f*

212

*p* *pp*

216

*cresc.* *fz* *p*

220

*pp*

224

*mp* *dim.* *pp*

227

*f* *p* *f* *dim.* *p* *pp*

232

*fz* *pp* *f espressivo*

239

*dim.*

## Violini I

244

*pp* *pp*

250

[ *sempre cresc.* ] *mf* *fz* *fz* *ff*

256

*fz* *fz*

261

**N**

*fff* *poco a poco accelerando* *8va*

266

*fff*

270

*ff* *fz*

275

*fz* *fz* *fz* **O**

279

*ff* *fz* > >

285

**P** *Tempo I* 3 1 1

*p* > *pp* *pp* *ppp*

## Violini I

294

1 2 **Q**

*dim.* *pp* *pp*

302

5 2

*ppp*

## II

Poco adagio (♩ = 56)

VI II

Violini I

6

*pp* *p* *cresc.* *f* >

11 **A**

*pp* *dim.*

14

*p* *pp*

17 *espressivo*

*f* *dim. p* > *pp* < < > *pp*

21

*pp*

24

*cresc.* *f* *dim.*

27

*p* *f* *ff* *mf* 2 **B** 1

## Violini I

33 *pp* *pp*

36 *pp* *f* 5

40 *ff* *dim.* *p*

44 **C** *pp* *pp* *mf*

55 *ff* *dim.* *p dim.* *pp*

59 *pp*

63 **D** *ff* [*p*] *dim.* *pp*

66 *cresc.* *f* *p* *molto cresc.* *p*

70 *pp* *dim.*



## Violini I

74 *fz* *p* *p* *pp*

77 *cresc.* *mf* *f* *pp dolce*

80 *pp* *cresc.*

84 *ff*

87 *f* *tr* *tr*

90 *ffz* *dim.*

92 *p* *pp* *ppp morendo*

98 *dim.* 1 2/4

104 1 1 *pp* 3 *ppp*

## Violini I

## III

Scherzo (♩. = 80)

Vivace

Violini I

The musical score for Violini I, Scherzo, III, Dvořák - Symphony nr 7 in D minor, is written in 6/4 time. The tempo is Vivace, with a quarter note equal to 80 beats. The key signature is one flat (B-flat). The score consists of eight staves of music, with measure numbers 6, 12, 18, 23, 29, 36, and 42 marked at the beginning of their respective staves. The music includes various dynamics (p, mf, f, ff, pp, dim.), articulations (accents, slurs, trills), and performance instructions (pizzicato, lespress.). The score ends with a double bar line and a repeat sign.

Dvořák - Symphony nr 7 in D minor

003-DvoSy7V11B

## Violini I

11

49 *mf* *p* *p* **B**

54 *pp* *cresc.* *molto* *f*

59 *ff* *ff* **C**

63 *fz* *fz* *fz* *fz* *fz*

69 *ff* *ff* **D**

77 *fz* *fz* *fz* *fz* *fz* *fz* *fz* *fz*

82 *fz* *fz* *fz* *ff*

87 *fz* *fz* *fz* *fz* *fz* *fz*

Dvořák - Symphony nr 7 in D minor

003-DvoSy7V11B

## Violini I

*poco meno mosso**sul G*

92 *pp* *p* *f* *dim.*

103 *p dim.* *pp* *E* 6 6 6

109 *pp* *pp* *dim.* 4

118 *ppp* *fz* 9 9 9 9

121 *dim.* *pp* 9 9 9 9

124 *pp* *pp* 1 *F*

130 *pp* *p* *pp* 1 2

139 *pizz.* *arco* *G* 1 8 5 *pp* *pp*

159 *accelerando* *pp* *mf* *cresc.*

163 *Vivace* *ff* *ff* *con forza* *H* 6 6 6 6 6 6 *ff rinforzando*

## Violini I

168 *ff* *pp*

174 *fp* *p* *fz cresc. fz*

180 *fz* *f* *p* *pp*

186 *fz* *fz* *fz* *mf espressivo*

193 *ff* *fz* *mf*

200 *ff* *dim.* *mp* *dim.*

205 *p* *dim.* *pp*

210 *f* *p* *dim.* *dim.* *ten.*

217 *pp* *dim.* *pp* *dim.*

223 *ppp* *poco a poco ritard.* *In Tempo* *Viol. II*

IV

Violini I

8

*pp*

*Poco a poco cresc.*

6

*pp* *fp* *fz* *f* *f<sup>3</sup>*

1

*pp* *pp* *f* *p* *f* *p* *p* *f* *p*

**A**

2

*f* *ff* *marcato* *ff*

0

60 *ritard.* 1  
*ff*

66 **B** *in tempo*  
*ff marcato* 1  
*f*

72 1  
*ff* *f*

78 *ff* *fz*

84 *fz* *f* *p* *p* 3 *dim.* 3 3 3 *f*

91 *ff* *f* *dim.*

98 5 **D** *pp*

108 *pp*

115 3 3 3 *f*

003-DvoSy7Vl1B



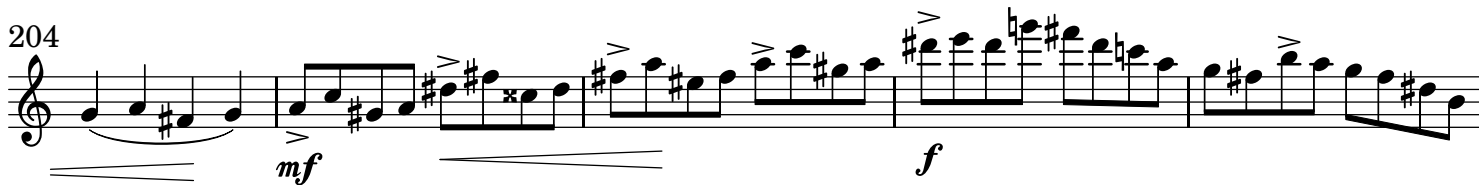
## Violini I

17

195



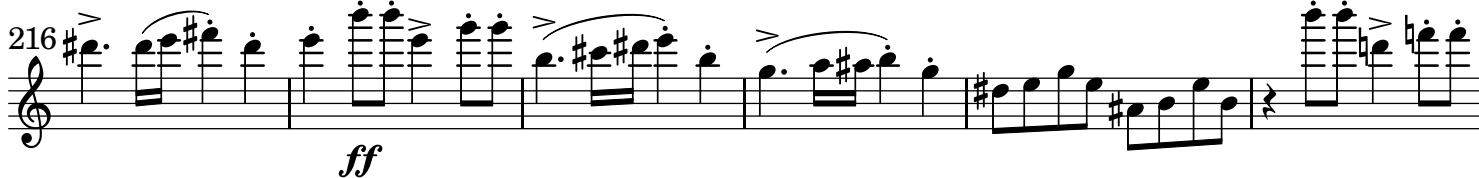
204

**[H]**

209



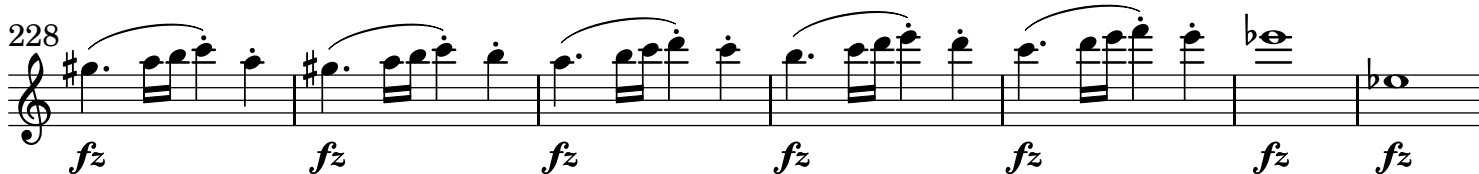
216



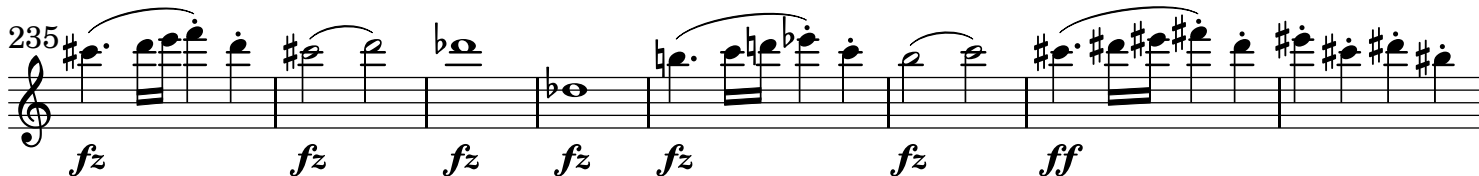
222



228



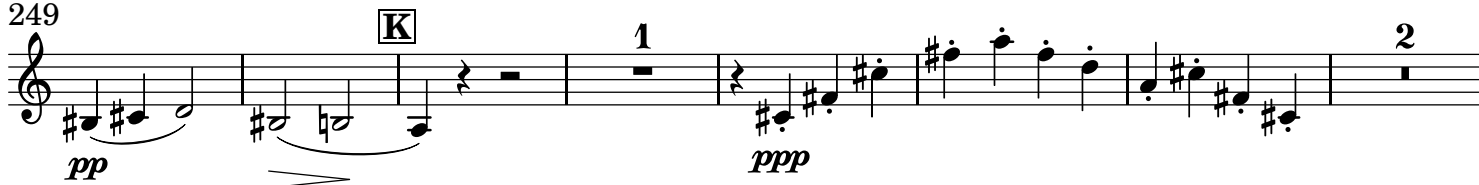
235



243



249



## Violini I

258 *pp* *ppp* *pp*

267 *pp* *poco cresc.*

276 *f* *ff*

283 *ff*

292 *fz* *fz* *ff*

302 *f* *mf* *p*

308 *dim.* *pp dim.* *pp*

314 *pp*

319 *tratt.* *p* *pp*

## Violini I

19

329 *mf* 3 3 3 3 3 3 *f* 1 *ff* *f*

336 *ff*

343 8- *fz fz fz fz fz*

350 *fz fz fz fz fz fz fz fz fz fz*

357 8- *fz fz fz fz fz fz fz fz ff ffz*

364 *ff ffz ff*

371

375 *ff fz*

380 *fz fz ff*

**N**

**O**

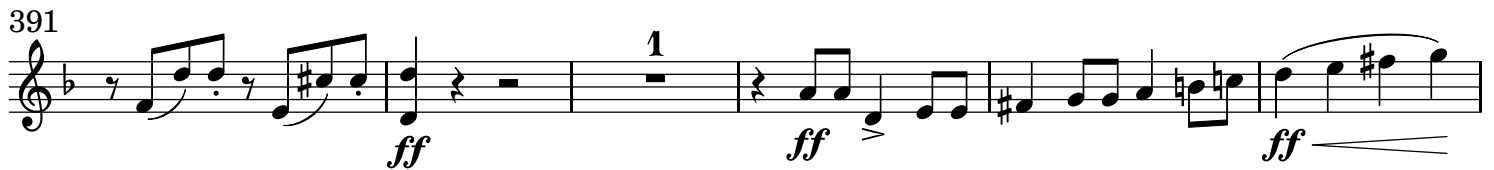
**P**

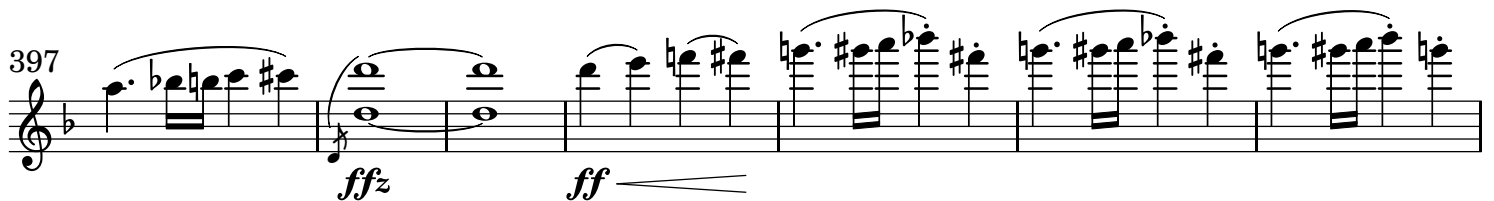
Dvořák - Symphony nr 7 in D minor

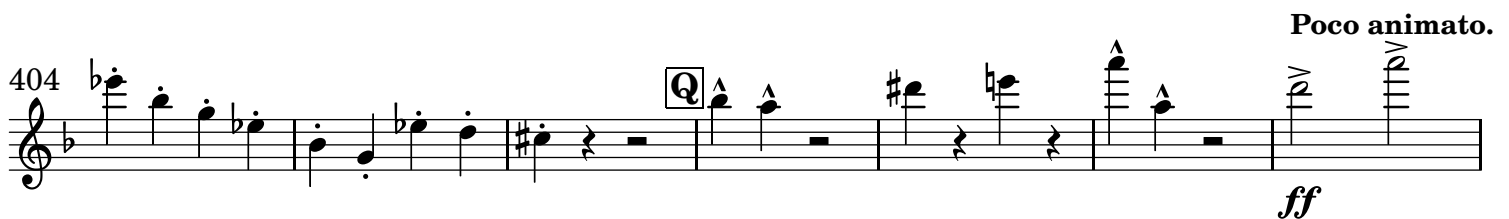
003-DvoSy7V11B

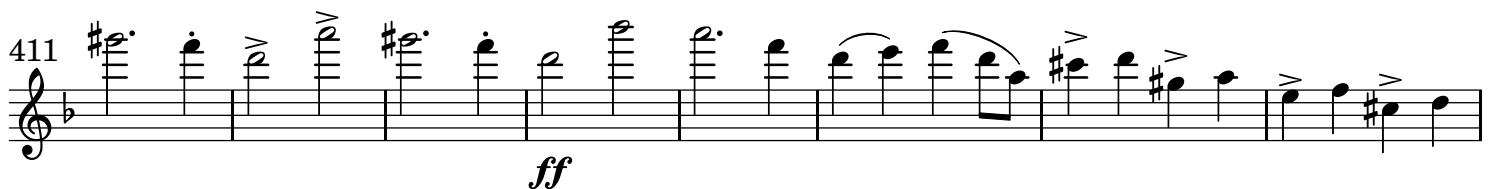
## Violini I

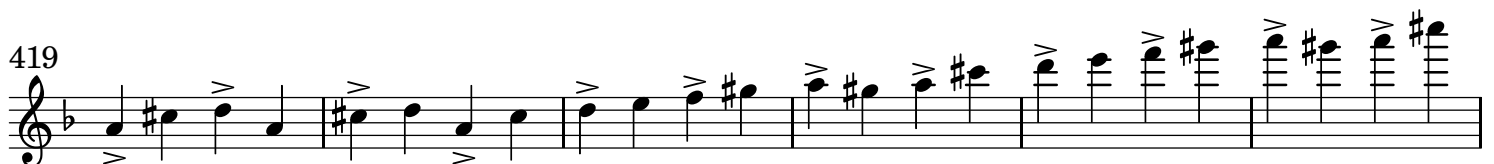
386 

391 

397 

404 

411 

419 

Molto maestoso.  
425 