

Symphonie n°2 en mi bémol

Cor 1

François-Joseph GOSSEC

Largo

Mi b

Measures 1-67 of the Cor 1 part in Largo. The key signature is one flat (B-flat). The time signature is 3/2. The score includes various musical notations such as rests, notes, and fingerings (5, 3, 5, 2, 4, 2, 3). A dynamic marking of *f* (forte) appears at measure 34. The section ends with a repeat sign and a *Segue* instruction.

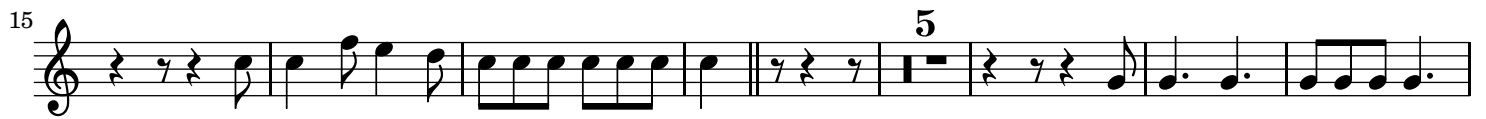
Allegro molto

Mi b

Measures 1-50 of the Cor 1 part in Allegro molto. The key signature is one flat (B-flat). The time signature is common time (C). The score includes various musical notations such as rests, notes, and fingerings (9, 3, 5, 7, 2, 9). The section ends with a repeat sign.

Cor 1

3

*Segue***Allegretto Pastorale gracioso - Presto****Presto**