

Symphony nr. 18 in F major K. 130

Wolfgang Amadeus Mozart (1756-1791)

Allegro.

Violino I

4

7

10

15

19

24

28

32

35

38

43

p

f

cresc.

tr

p

f

48 *p*

52 *f*

56 *p*

60 *f* *p* *f*

63 2 *p*

68 *f*

72

75 *tr*

79 *f*

84 *p*

87 *f*

90

93

Detailed description: This musical score is for a single melodic line in B-flat major, spanning measures 48 to 93. The notation is on a single staff with a treble clef. The key signature has two flats (B-flat and E-flat). The score includes various musical notations such as eighth notes, quarter notes, half notes, and rests. Dynamics are indicated by 'p' (piano) and 'f' (forte). A trill is marked with a wavy line and 'tr' in measure 75. A double bar line with repeat dots appears at the end of measure 60. Measure 63 features a '2' above the staff, indicating a second ending. The piece concludes with a final chord in measure 93.

97

101

104

108

113

118

121

126

129

p

f

p

f

p

f

p

f

Andantino grazioso.

Violino I

11

21

con sordino

p

f

tr

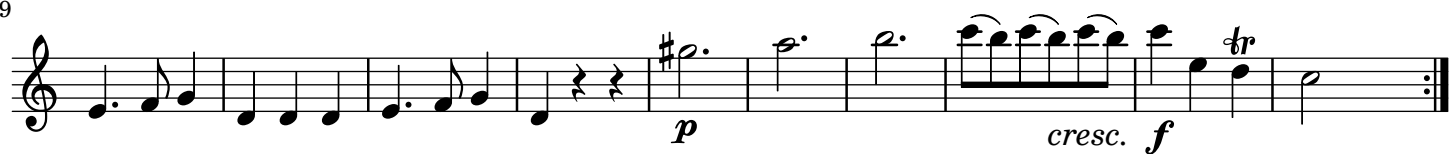
tr



MENUETTO.



29

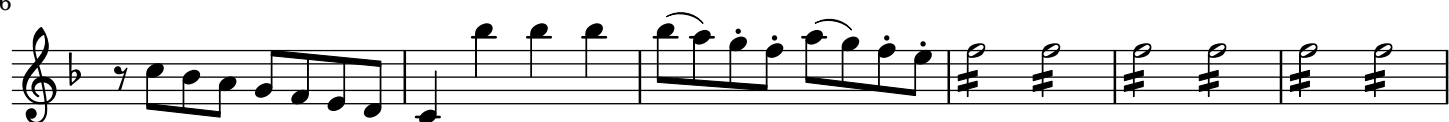


Men.D.C.

Allegro molto.



6



12



18



23



29



35



40



44



50



56



6

61



67



72



79



84



90



96



103



110



116



126



132



137



144



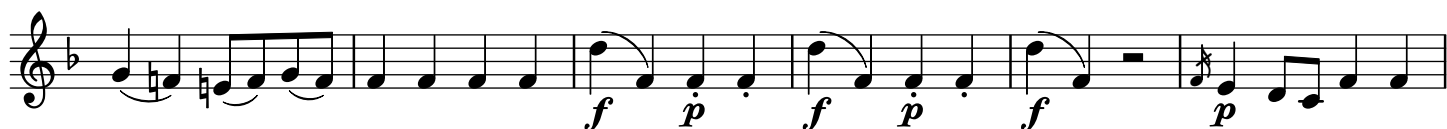
149



154



159



165



170



175



181



186



192

