

String Quartet KV. 465 (nr. 19) "Dissonances"

for 2 violins, viola and cello

Cello.

W. A. Mozart (1756-1791)

Adagio.

8

p *cresc.* *f* *p* *cresc.*

f *p* *f* *sf*

17

sf *sf* *fp*

31

f *sf*

36

p *sf* *p* *sf* *p*

42

f *sf* *p* *cresc.*

48

f *f*

53

p *f* *p* *f*

59

p

64

p

68

f *p* *f*

75

p *f* *p*

81

f

Cello.

2 Cello.

88

95

100

108

118

124

130

136

142

148

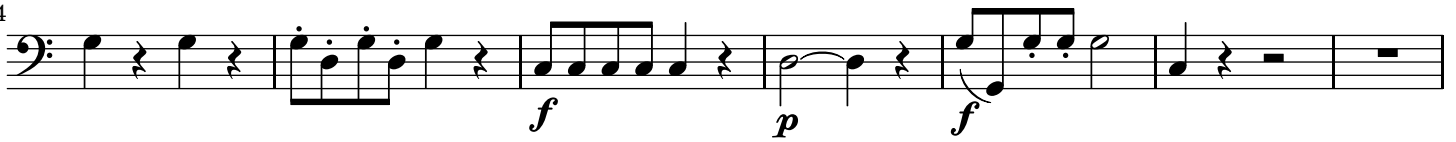
155

163

168

This musical score for Cello spans measures 88 to 168. The notation is in bass clef with a key signature of one flat (B-flat). The score includes various musical notations such as eighth notes, quarter notes, half notes, and full notes, often beamed together in groups. Dynamic markings are used throughout, including *p* (piano), *f* (forte), *cresc.* (crescendo), and *sf* (sforzando). Measure 100 features a repeat sign with a first ending bracket. Measure 118 includes a double bar line. The piece concludes with a final measure (168) containing a whole note and a repeat sign.

174



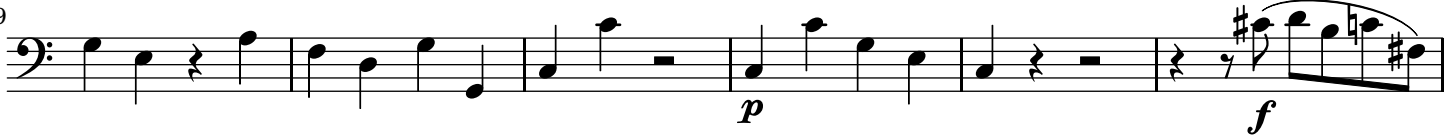
181



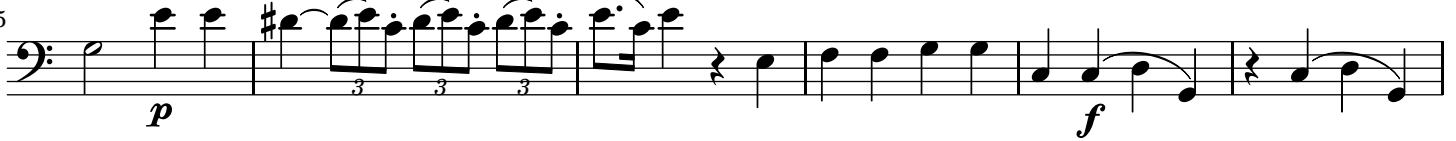
185



189



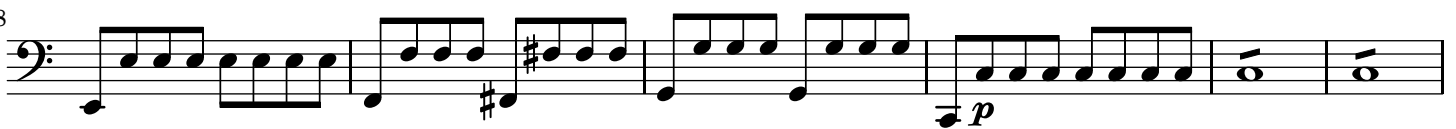
195



201



208



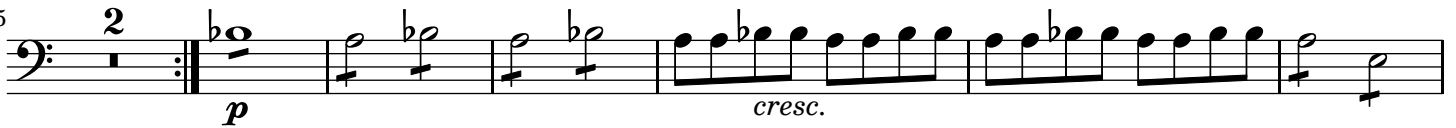
214



219



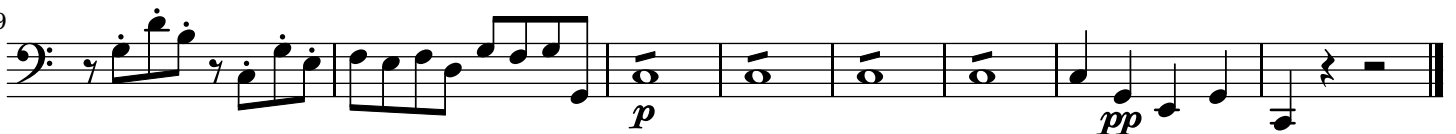
225



233



239



Andante cantabile.



Cello.

4
6

10

14

18

22

26

29

34

40

44

49

53

57

f

p

p *cresc.*

f

p

pp

f

p

f

p *cresc.* *p*

cresc. *f*

p *f* *p* *cresc.*

p *cresc.*

p *cresc.* *f* *p* *p*

f *p* *f*

61 *p* *cresc.*

65 *f* *p*

69 *cresc.* *f*

73 *p* *pp*

77 *f*

81 2 *p* *fp* *pp*

87 *cresc.*

90 *f*

93 *p* *sf* *p* *sf* *p* *fp*

97 *f* *p* *cresc.* *p* *p*

103

107 *cresc.* *p*

111 *pp*

Minuetto.

6

12

22

31

42

54

Trio.

76

85

94

M.D.C.

Allegro.

11

20

cresc.

30 *p* *f*

40

50 *p* *f* 8

66 *p*

77 *fp* *fp* *fp* *fp*

88 *p*

98 2

111 *p*

121

132 *p* 2

144 *cresc.* *f* *p*

154 *f*

164

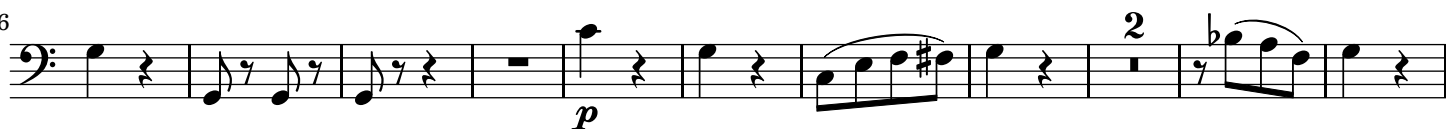
174



184



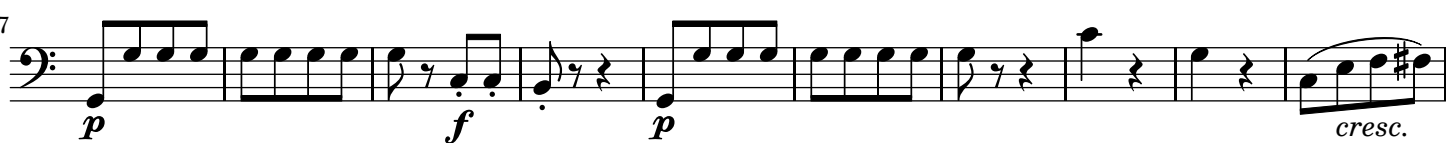
196



208



217



227



237



248



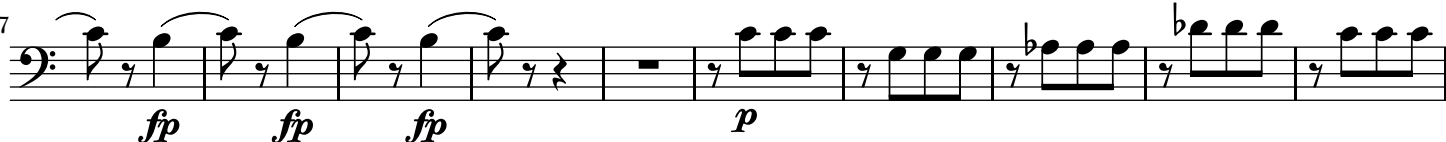
258



276



287



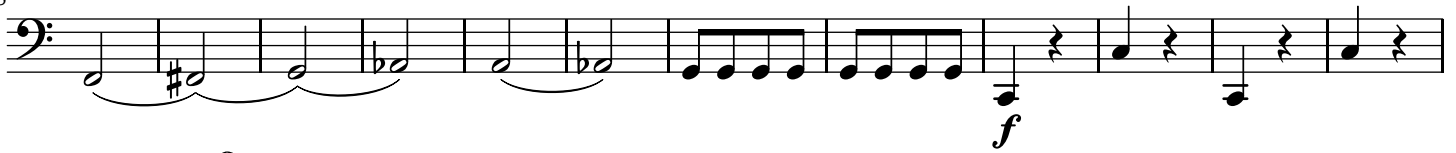
297



307



318



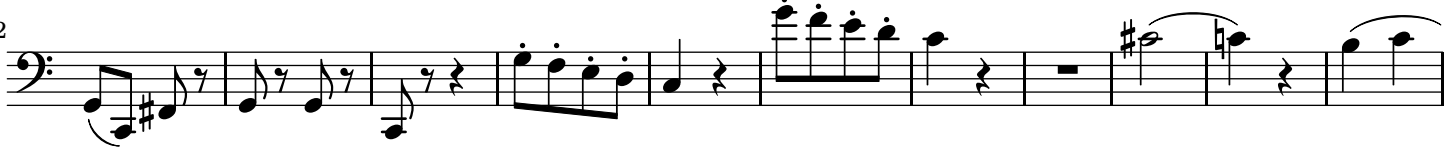
330



341



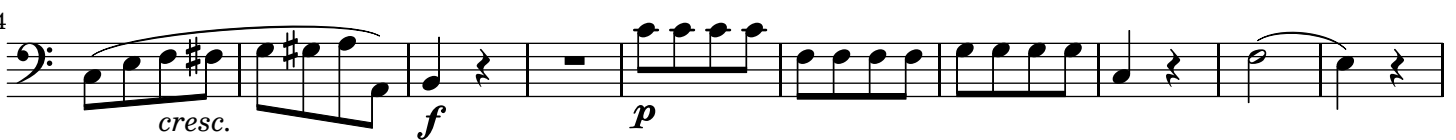
352



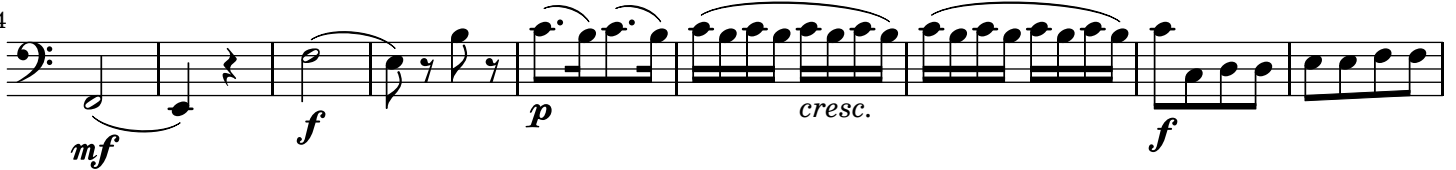
363



374



384



393



402



410

