

String Quartet KV. 465 (nr. 19) "Dissonances"

for 2 violins, viola and cello

Cello.

W. A. Mozart (1756-1791)

Adagio.

8

17

31

37

44

50

57

63

67

74

80

p *cresc.* *f* *p* *cresc.*

f *p* *f* *sf*

sf *sf* *fp*

f *p* *sf*

p *sf* *p* *f*

sf *p* *cresc.* *f*

f *p* *f*

p *f* *p*

f *p* *f*

p *f* *p*

f *p* *f*

p *f*

Allegro.

8

87



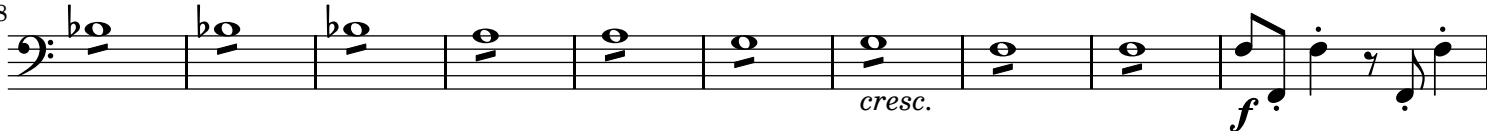
94



100



108



118



124



130



136



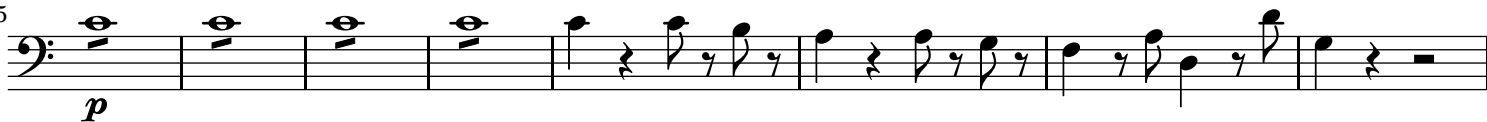
142



148



155



163



169 *p sf p f p*

176 *f p f p*

182

186 *f*

192 *p f p*

198 *f p f*

205

211 *p*

218 *cresc. f*

224 *p p cresc.*

233

239 *p pp*

Andante cantabile.

p f p cresc. p

Cello.

4
6

11

16

21

26

29

35

41

46

51

56

61

65

p cresc. *f*

p *p*

cresc. *f* *p*

pp

f *p* *cresc.* *p* *cresc.*

f *p*

f *p* *cresc.* *p*

cresc. *p cresc.* *f* *p*

p *f* *p* *f*

p *cresc.*

f *p*

69 *cresc.* *f*

73 *p* *pp*

77

80 *f* *p* *fp* *pp*

86

89 *cresc.* *f*

92 *p* *sf* *p* *sf*

96 *p* *fp* *f* *p* *cresc.* *p* *p*

102

107 *cresc.* *p*

111 *pp*

Minuetto.

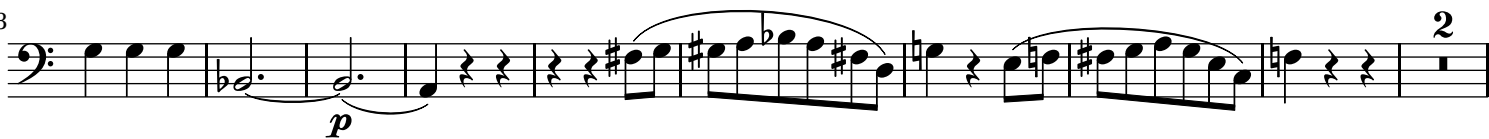
p *f* *f* *sf*

4

13



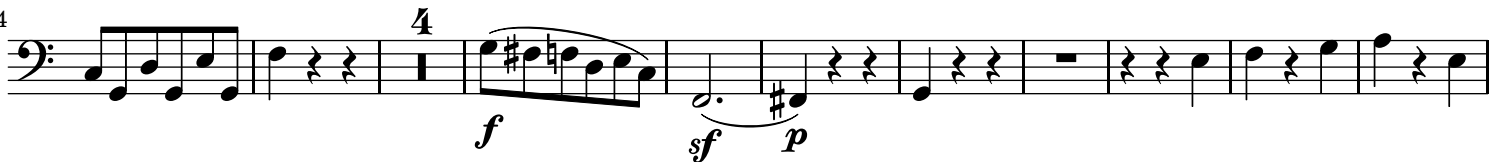
23



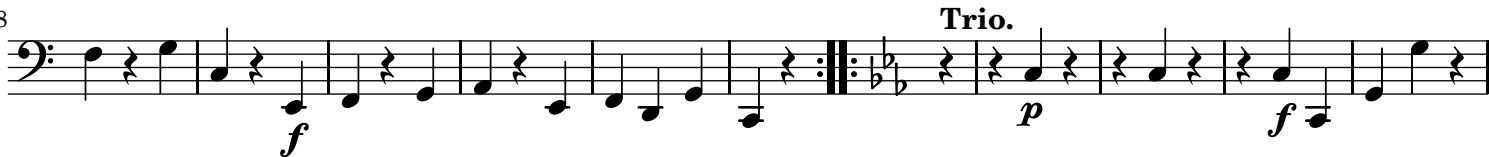
34



44



58



68



82



93

**Allegro.**

11



20



31



41

51

68

79

90

99

112

123

134

146

156

166

p

f

fp

cresc.

f

p

8

2

2

Detailed description of the musical score: The score is for a cello part, spanning measures 41 to 166. It is written in bass clef with a key signature of one flat (B-flat). The notation includes a variety of rhythmic values: eighth notes, quarter notes, half notes, and rests. Dynamic markings are used throughout: *p* (piano) at measures 51, 68, 112, 134, 146, and 156; *f* (forte) at measures 79, 146, and 156; *fp* (fortissimo) at measures 79 and 80; and *cresc.* (crescendo) at measure 146. There are also first and second endings marked with '1' and '2' at measures 99-100 and 134-135. A repeat sign is present at measure 156. The page number '7' is located in the top right corner.

176

The bass line of 'The Rose Tree' is written on a single staff. It begins with a treble clef and a key signature of one sharp (F#). The melody consists of eighth and sixteenth notes, with some measures containing beamed sixteenth notes. The piece concludes with a final measure containing a whole note G4 and a fermata.

187

[illegible]

199

[illegible]

211

220

[illegible]

230

0

p *f*

240

[illegible]

251

1

8

p

f

268

8 

279

[illegible]

291

1

p

301

[illegible]

312

[illegible]

325

337

348

359

382

392

401

410